

Monthly Weather Summary in Thailand March 2018

In March 2018, the weather condition was hot in most areas of upper Thailand with very hot in some places from early month as a result of the northeast monsoon which prevailed over Thailand during the previous month has changed to the southeasterly wind in addition with the periodical covering of heat low pressure cell over upper Thailand. This year, the beginning of summer in Thailand was two weeks later than usual, it started on March 3 with swelter weather in most areas for almost the whole month with very hot weather in some areas in the northern part during early month. However, due to the influence of the high pressure area from China extending its ridge to cover upper Thailand caused unusual rainfall with thundershower and gusty wind in many areas and hail in some places and temperature relatively decreased at that time inducing average temperature of March in upper Thailand was below normal. In southern part, the easterly wind prevailed over the Gulf of Thailand and the southern part mostly weak, less rainfall was observed in southern Thailand except for increasing rainfall due to the strengthened of the easterly wind during late month. Monthly rainfall was above normal in almost parts of the country i.e. northeastern part 2.2 mm (5%), central part 5.0 mm (14%) and eastern part 25.3 mm (41%) while there were below normal rainfall in the northern part 0.7 mm (2%), southern part (east coast) 17.1 mm (25%) and southern part (west coast) 16.3 mm (18%).

1 - 10 March: Heat low pressure cell covering upper Thailand and the southeasterly wind prevailing over the northeastern and eastern parts during the first half of the period after that the high pressure areas from China extended its ridge to cover the northeastern part before covering upper Thailand and the South China Sea respectively. These caused morning cool weather in the northern and northeastern parts with cold weather in some areas in the upper northern almost the whole period especially on the last day of the period that temperature decreased in the northeastern part with cool weather in general and cold weather in some areas. The lowest minimum temperature was 10.5 °C at Umphang in Tak province on March 5. In the mountainous areas and mountain tops, temperature climbed down to 3.7 °C at Kew Mae Pan, Chom Thong in Chiang Mai province on March 3. However, daytime temperature was increased with hot weather in most areas in upper Thailand with extremely hot of 40.0 °C at Amphoe Mueang in Uttaradit province on March 4. For rainfall, upper Thailand received scanty rain during the first half of the period after that scattered to fairly widespread rain with heavy to very heavy rainfall. The maximum daily rainfall of 117.2 mm was recorded at Don Tum in Nakhon Pathom province on March 9. Thunderstorms with gusty wind was observed at Si Sa Ket, Amnat Chareon, Surin and Yasothon provinces on March 5 and at Ubon Ratchathani and Lop Buri provinces on March 5 and at Phetchabun, Khon Kaen, Buriram, Roi Et, Nong Bua Lamphu, Mahasarakham, Loei, Chaiyaphum, Uthai Thani, Pratumthani, Prachin Buri and Chachoengsao provinces on March 7. Hail was observed at Kamphaeng Phet province on March 7. In southern part, isolated rain was found during this period except the late period scattered rain with heavy to very heavy rainfall was observed in some areas along the east coast by the prevailing of the easterly wind over and the Gulf

of Thailand and southern part at that time. The highest daily rainfall was 97.0 mm at Sawi Post Office in Chumphon province on March 10 with the occurrence of thundershower and gusty wind at Phuket and Krabi provinces on March 5.

11 – 20 March: During early period, high pressure areas covering upper Thailand was weak and then the heat low pressure cell dominated upper Thailand accompanied with the prevailing of the southeasterly wind resulted in hot weather in upper Thailand in almost areas during the middle and the end of the period with the highest maximum temperature of 39.6 °C at Thoen in Lampang province on March 19. For rainfall, isolated to widely scattered rain was observed in the northern and central parts with heavy rainfall for few days. The maximum daily rainfall was 85.1 millimeter at Klong Yai in Trat province on March 18. Thundershower with gusty wind was observed at Udon Thani, Suphan Buri, and Chai Nat provinces on March 13 and at Kalasin, Nong Khai, Sakon Nakhon, Surin, Nong Bua Lamphu, Mahasarakham and Roi Et provinces on March 14 and at Chachoengsao province on March 15 and at Chiang Rai province on March 17 and at Phayao, Udon Thani, Roi Et and Chon Buri provinces on March 18 and at Yasothon and Ubon Ratchathani on March 19 and at Surin, Khon Kaen, Si Sa Ket and Nakhon Ratchasima provinces on March 20. Hail was observed at Chiang Rai on March 11 and at Nakhon Phanom province on March 14 and at Chiang Rai on March 18. In southern part, hot weather was found in many areas and with the prevailing of the easterly wind over southern part, isolated rain with heavy to very heavy rainfall in some areas was observed for few days. The heaviest daily rainfall in southern part was 97.8 millimeter at Phanom in Surat Thani province on March 11 with the occurrence of gusty wind at Yala province on March 16.

21 – 31 March: The combination of the high pressure area extending to cover upper Thailand during the first half of the period and the another high pressure ridge extended to dominate the mentioned areas during late period, the prevailing of the southerly and southeasterly wind over upper Thailand during mid-period led to more rain in most areas of upper Thailand especially during late period that experienced unusual rainfall inducing temperature decreased in several places. The maximum daily rainfall in upper Thailand was 99.6 mm at Loei Agrometeorological Station in Loei province on March 30. Gusty wind was observed in Surin, Khon Kean, Si Sa Ket and Nakhon Ratchasima provinces on March 20 and at Kamphaeng Phet and Uthai Thani provinces on March 21 and at Tak, Lampang and Nakhon Phatom provinces on March 31. However, hot weather remained in many areas mainly in the northern, central and upper eastern regions. The highest maximum temperature was 39.2 °C at Amphoe Mueang in Tak province on March 26. In southern part, with the strengthening of the easterly wind during March 23-24 and late period caused increasing rainfall with scattered to fairly widespread rain with heavy to very heavy rainfall in some areas mainly along the east coast. The heaviest daily rainfall was 164.5 millimeter at Tak Bai in Narathiwat province on March 23.

Note : Rainfall, temperatures and natural disasters in this report were updated up to April 4, 2018.

Climatological Center
Meteorological Development Division
Meteorological Department

Monthly Current Report
Rainfall and Accumulative Rainfall
March 2018

Northern Thailand

Station	Temperature (°c)		Rainfall (mm)		Accumulative rainfall (mm) Since 1 January	
	Mean	Above or below normal	Actual	Above or below normal	Actual	Above or below normal
Chiang Rai	24.7	0.1	35.6	7.4	50.2	0.7
Mae Hong Son	26.5	-0.2	7.5	-9.3	12.9	-16.3
Phayao	25.6	-0.8	32.5	2.3	42.6	-2.5
Chiang Mai	27.9	0.8	10.6	-7.2	10.9	-20.0
Tha Wang Pha	25.5	-0.4	65.3	31.8	112.6	63.1
Nan	26.7	-0.1	28.9	-3.8	55.1	6.1
Lamphun	27.9	0.2	1.0	-12.1	1.4	-19.4
Lampang	27.9	-0.1	1.8	-21.0	40.2	5.8
Mae Sariang	26.3	0.3	0.0	-14.2	0.4	-21.8
Phrae	27.6	-0.3	27.0	-0.6	103.1	60.9
Uttaradit	28.6	-0.1	3.6	-19.8	22.9	-20.5
Bhumibol Dam	28.9	-0.8	27.8	6.7	35.4	4.8
Tak	29.6	-0.6	63.4	51.3	92.6	69.7
Mae Sot	28.0	0.8	0.0	-15.5	5.4	-20.0
Umphang	24.5	0.1	28.1	-19.8	84.0	20.2
Phitsanulok	29.1	-0.1	0.4	-26.3	39.7	-4.4
Lom Sak	27.8	-0.2	69.6	25.8	94.2	28.5
Phetchabun	28.7	0.0	67.4	19.5	143.1	73.5
Wichian Buri	29.4	-0.1	35.9	-14.7	68.8	-2.1
Kamphaeng Phet	28.9	0.2	41.5	4.8	92.6	40.5
Over the area	27.5	-0.1	27.4	-0.7 -2%	55.4	12.3 29%

Northeastern Thailand

Station	Temperature (°c)		Rainfall (mm)		Accumulative rainfall (mm) Since 1 January	
	Mean	Above or below normal	Actual	Above or below normal	Actual	Above or below normal
Nong Khai	27.5	-0.1	1.2	-38.6	27.2	-38.2
Loei	26.5	-0.4	46.3	7.0	90.6	29.0
Udon Thani	27.6	-0.4	1.0	-48.7	19.7	-58.3
Nakhon Phanom	26.6	-0.4	86.0	25.9	104.9	10.8
Sakon Nakhon	26.0	-1.2	41.9	-15.6	109.0	17.5
Mukdahan	26.6	-1.1	65.0	26.2	119.3	59.4
Khon Kaen	27.4	-1.1	28.0	-14.1	34.4	-33.1
Kosum Phisai	27.6	-0.8	59.9	8.1	69.1	-1.2
Roi Et	27.4	-0.8	62.6	21.4	63.9	-0.1
Chaiyaphum	28.8	0.0	7.6	-43.7	10.7	-59.4
Ubon Ratchathani	27.6	-1.3	140.0	109.5	140.0	92.1
Tha Tum	28.0	-0.7	46.1	1.9	47.7	-17.7
Surin	28.0	-0.7	64.5	18.9	81.8	19.1
Nakhon Ratchasima	28.6	-0.3	28.5	-8.6	109.6	48.2
Chok Chai	28.3	-0.2	1.3	-36.2	45.3	-11.0
Nang Rong	27.5	-0.9	70.3	22.4	80.9	8.7
Over the area	27.5	-0.7	46.9	2.2 5%	72.1	4.1 6%

- NOTES :
- 1) Mean temperature is the average of daily dry-bulb temperature
 - 2) "T" is trace, rainfall amount less than 0.1 mm.
 - 3) "blank" is incomplete data.
 - 4) Temperature and rainfall are preliminary data.

Monthly Current Report
Rainfall and Accumulative Rainfall
March 2018

Central Thailand

Station	Temperature (°c)		Rainfall (mm)		Accumulative rainfall (mm) Since 1 January	
	Mean	Above or below normal	Actual	Above or below normal	Actual	Above or below normal
Nakhon Sawan	30.2	0.0	11.2	-21.9	48.5	-0.8
Bua Chum	29.0	-0.5	23.9	-21.9	136.5	74.9
Lop Buri	29.4	-0.1	33.7	1.6	188.3	143.6
Suphan Buri	29.5	0.5	45.0	26.1	50.7	21.2
Thong Pha Phum	29.1	0.3	0.0	-46.4	20.0	-48.2
Kanchanaburi	30.0	0.3	30.9	1.9	46.6	-3.9
Bangkok Airport	29.3	-0.2	106.8	66.4	257.5	196.7
Bangkok Metropolis	29.5	0.0	76.4	34.3	254.5	179.1
Over the area	29.5	0.0	41.0	5.0 14%	125.3	70.3 128%

Eastern Thailand

Station	Temperature (°c)		Rainfall (mm)		Accumulative rainfall (mm) Since 1 January	
	Mean	Above or below normal	Actual	Above or below normal	Actual	Above or below normal
Prachin Buri	29.3	-0.2	18.4	-31.5	198.8	125.4
Kabin Buri	28.0	-1.1	122.6	71.1	322.4	237.0
Aranyaprathet	29.1	-0.5	108.5	56.1	205.2	119.8
Chon Buri	29.3	0.1	15.5	-32.0	85.4	13.7
Ko Sichang	28.4	-0.3	65.6	16.0	234.6	158.4
Pattaya	28.3	0.1	51.0	-2.3	121.5	38.3
Sattahip	28.0	-0.6	74.6	15.8	150.0	46.2
Rayong	28.7	-0.3	120.1	49.8	142.3	14.8
Chanthaburi	28.3	0.2	106.9	35.0	334.5	207.5
Khlong Yai	27.9	0.0	190.8	75.5	284.3	45.8
Over the area	28.5	-0.3	87.4	25.3 41%	207.9	100.6 94%

- NOTES :
- 1) Mean temperature is the average of daily dry-bulb temperature
 - 2) "T" is trace, rainfall amount less than 0.1 mm.
 - 3) "blank" is incomplete data.
 - 4) Temperature and rainfall are preliminary data.

Monthly Current Report
Rainfall and Accumulative Rainfall
March 2018

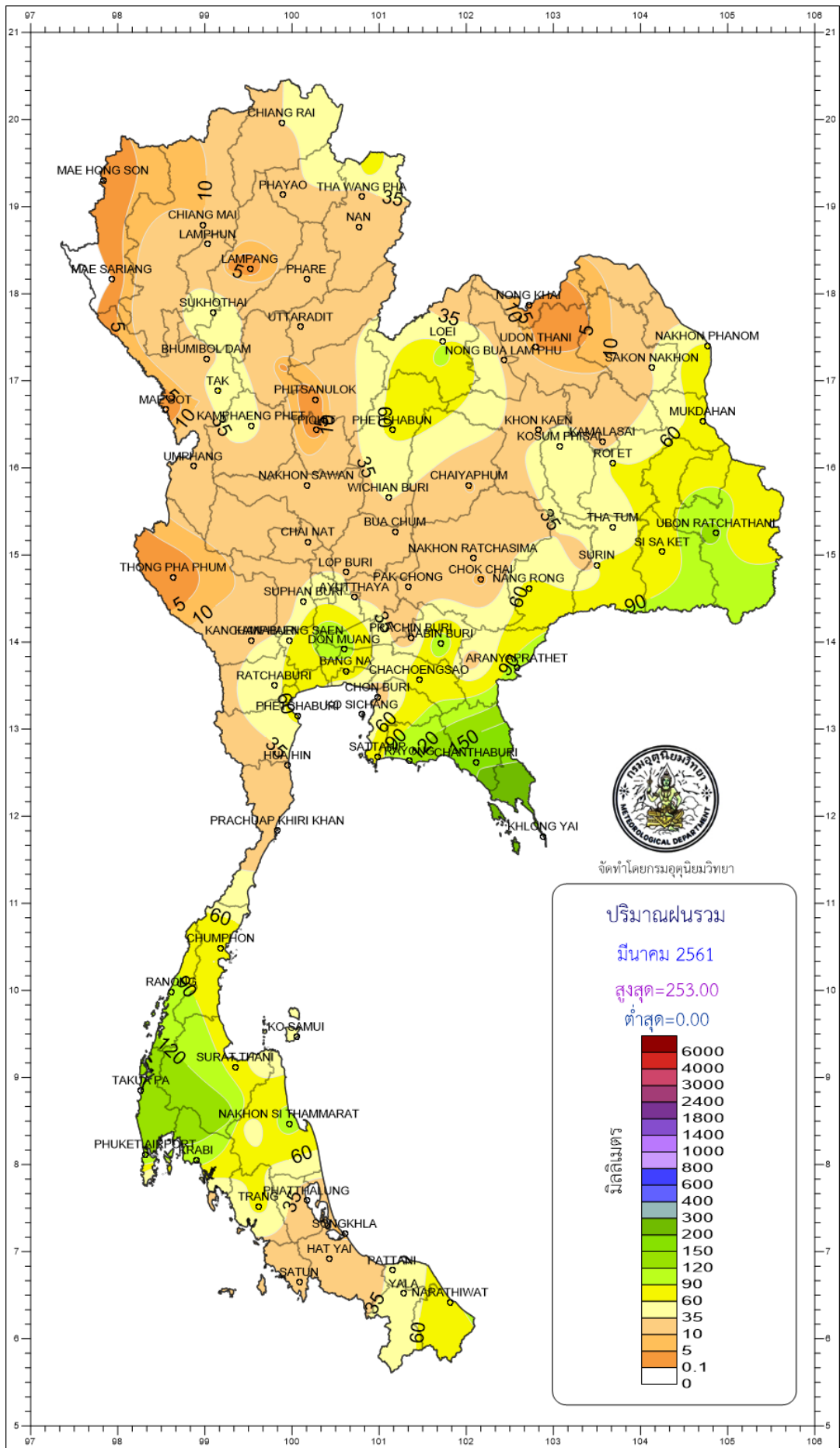
Southern Thailand, east coast

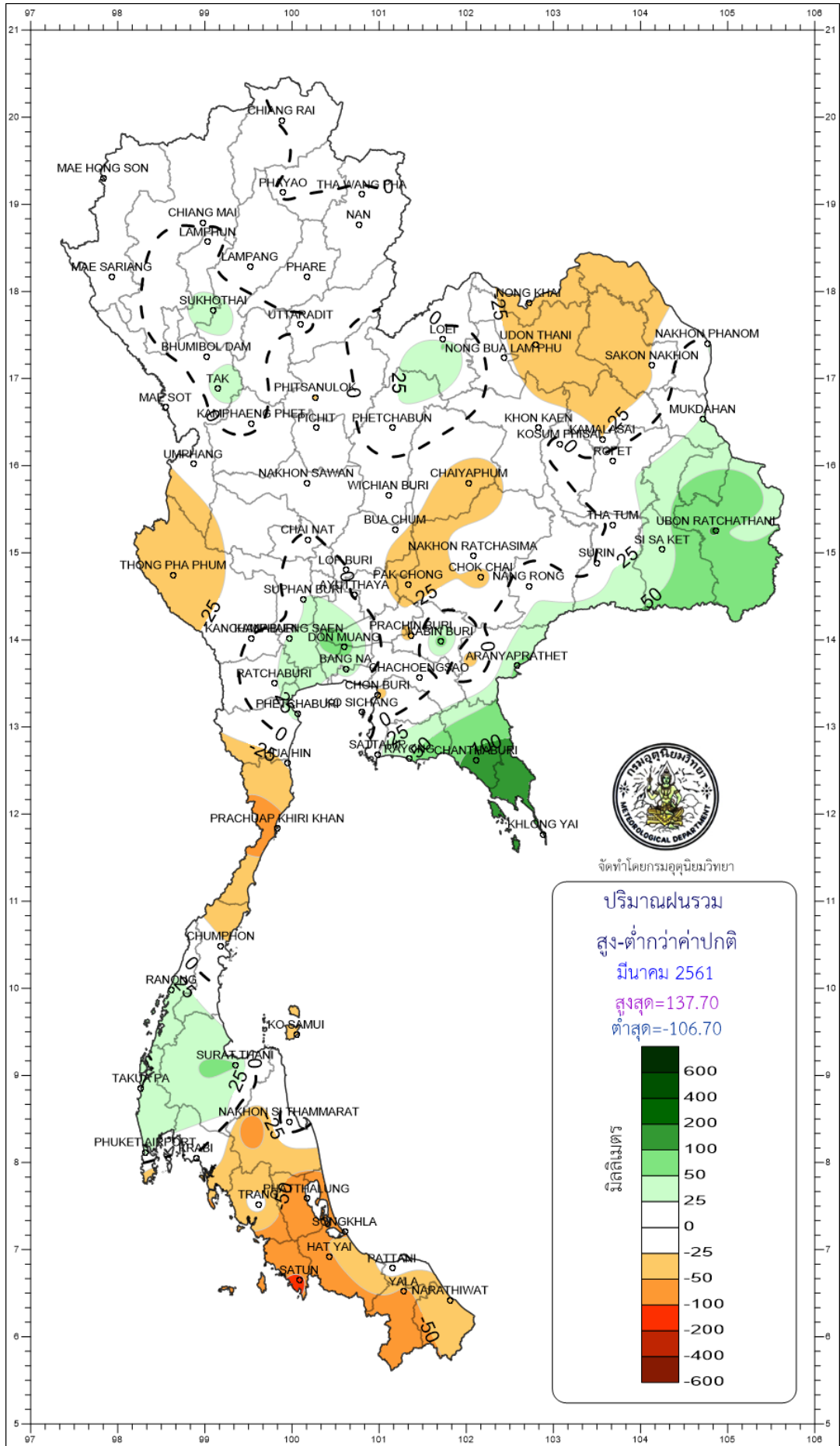
Station	Temperature (°c)		Rainfall (mm)		Accumulative rainfall (mm) Since 1 January	
	Mean	Above or below normal	Actual	Above or below normal	Actual	Above or below normal
Phetchaburi	29.1	0.6	66.1	33.0	100.1	51.7
Hua Hin	28.7	0.3	32.7	-21.2	96.5	15.5
Prachuap Khiri Khan	28.6	0.7	13.3	-58.5	125.7	7.7
Chumphon	27.9	0.1	74.5	-22.7	169.6	-31.7
Surat Thani	28.1	0.6	76.3	52.3	132.4	59.3
Ko Samui	28.5	0.3	43.0	-37.8	316.7	95.3
Nakhon Si Thammarat	27.8	0.4	114.7	25.0	353.7	50.4
Songkhla	28.3	0.2	1.4	-58.3	295.1	112.0
Hat Yai Airport	27.9	0.3	16.2	-58.9	150.2	-3.1
Pattani Airport	27.8	0.5	38.6	-10.8	248.9	116.6
Narathiwat	27.5	0.2	88.0	-29.4	492.3	219.6
Over the area	28.2	0.4	51.3	-17.1 -25%	225.6	63.0 39%

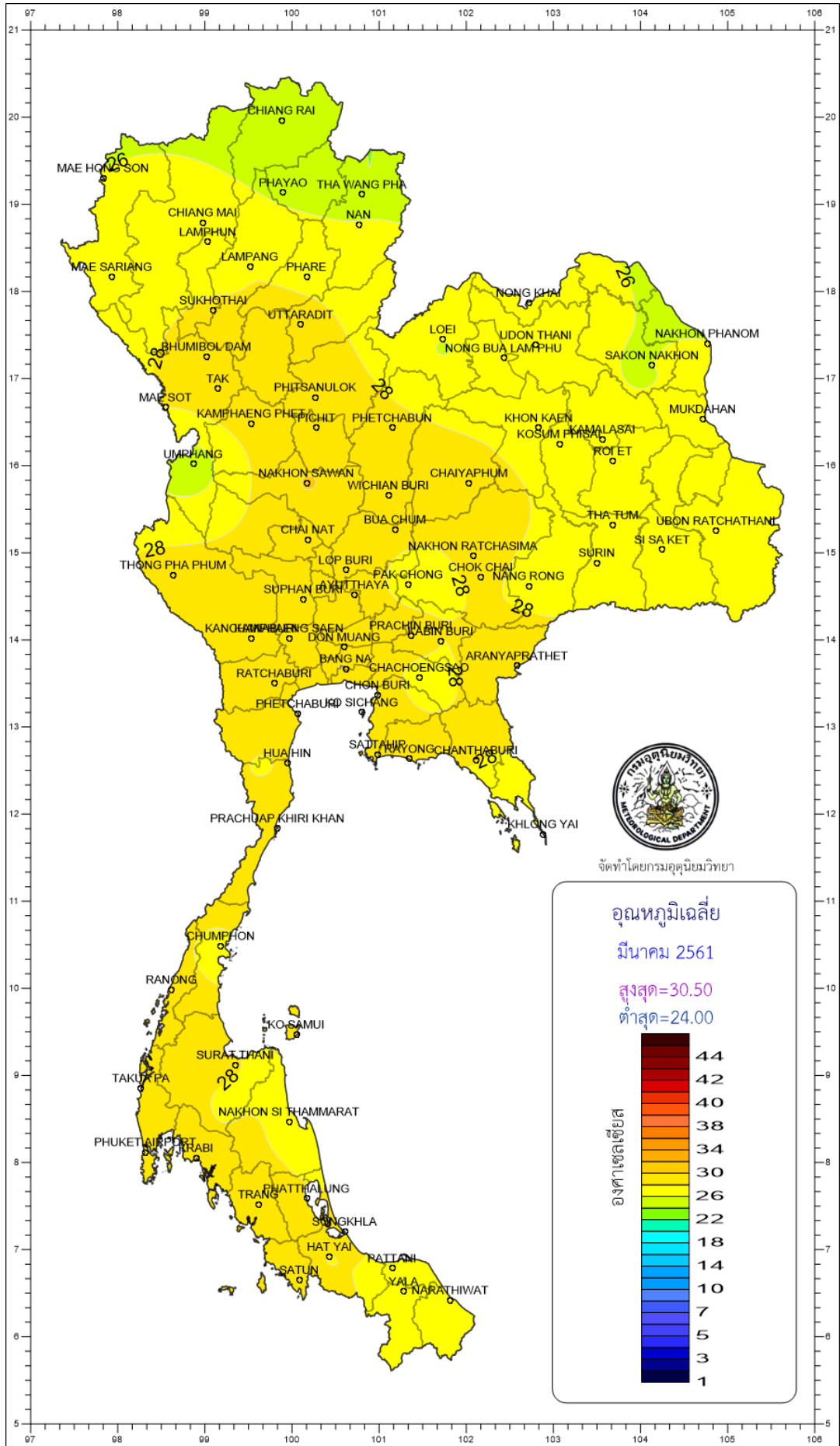
Southern Thailand, west coast

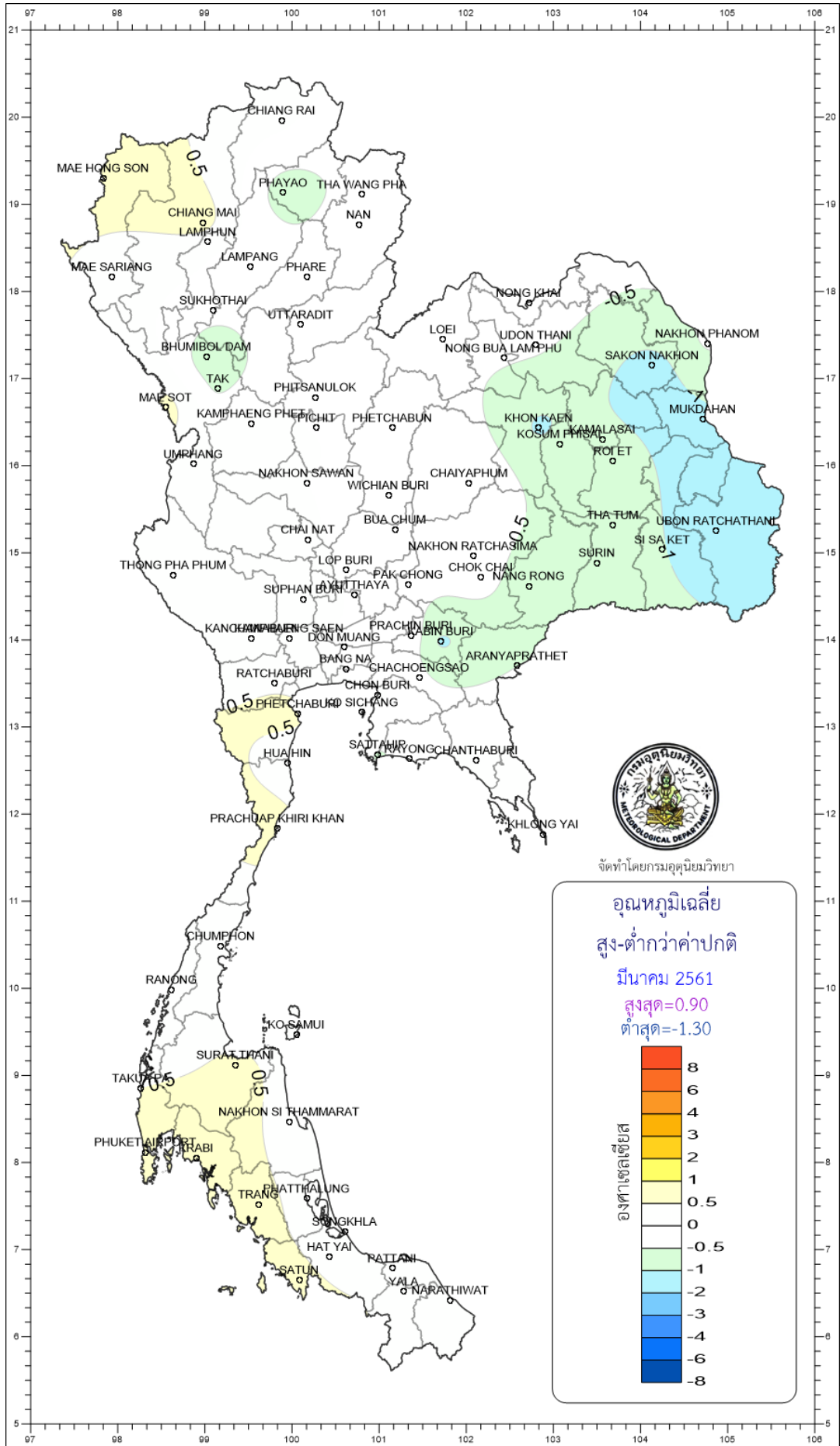
Station	Temperature (°c)		Rainfall (mm)		Accumulative rainfall (mm) Since 1 January	
	Mean	Above or below normal	Actual	Above or below normal	Actual	Above or below normal
Ranong	28.4	0.0	106.6	41.4	196.0	104.8
Takua Pa	28.2	0.5	139.6	25.0	516.5	321.4
Phuket	30.0	0.8	34.1	-39.4	205.1	77.4
Phuket Airport	29.2	0.9	132.6	32.3	443.0	279.3
Ko Lanta	29.4	0.6	9.6	-52.9	313.8	218.4
Trang Airport	28.7	0.6	69.7	-13.7	221.7	85.0
Satun	29.1	0.7	15.3	-106.7	99.3	-89.7
Over the area	29.0	0.6	72.5	-16.3 -18%	285.1	142.4 100%

- NOTES :
- 1) Mean temperature is the average of daily dry-bulb temperature
 - 2) "T" is trace, rainfall amount less than 0.1 mm.
 - 3) "blank" is incomplete data.
 - 4) Temperature and rainfall are preliminary data.









จัดทำโดยกรมอุตุนิยมวิทยา

